



*Rizebo*  
SINCE 1997  
KING OF TENTS  
[www.rizebo.com](http://www.rizebo.com)

*Rizebo*  
SINCE 1997  
KING OF TENTS  
[www.rizebo.com](http://www.rizebo.com)

# **RIZEBO SPA TENTS KING OF TENTS**

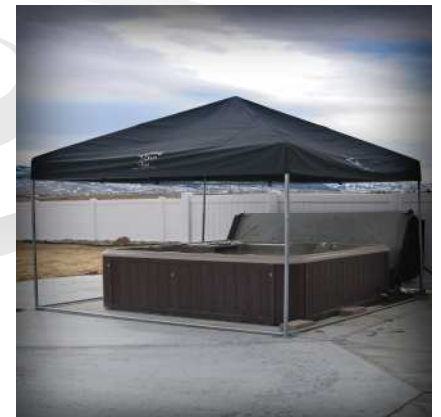
**MANUFACTURED BY UNIQUE U.S. PRODUCTS  
P.O. BOX 338  
424 WEST CHICAGO ROAD  
WHITE PIGEON, MI 49099  
PH: 1-877-RIZEBO-1  
PH: 1-888-483-7615  
RIZEBO.COM  
RIZEBO@YAHOO.COM**

# INTRODUCTION

- **RIZEBO IS A SPECIALLY DESIGNED SPA TENT THAT FITS AROUND ANY SIZE SPA. IT'S MAIN PURPOSE IS TO ALLOW THE CONSUMER TO ENJOY THE USE OF THEIR SPA DURING ANY KIND OF WEATHER.**
- **RIZEBO IS MADE OF A HIGH QUALITY POLYESTER/SATIN TENT THAT CAN WITHSTAND WINDS UP TO 80 MPH. IT WILL PROTECT THE CONSUMER FROM WIND ,HAIL, RAIN AND SNOW.**
- **THE SPECIAL TENT DESIGN ALSO ALLOWS THE STEAM AND HEAT TO BE TRAPPED IN THE TENT GIVING THE CONSUMER AN ADDED STEAM ROOM.**
- **THE RIZEBO DOES NOT ONLY GIVE THE CONSUMER MORE OPPORTUNITIES TO ENJOY THEIR SPA, BUT IT ALSO PROLONGS THE LIFE OF THE SPA BY PROTECTING IT FROM ALL THE ELEMENTS.**
- **GO GREEN!! SAVE MONEY ON YOUR HEATING BILL WITH THE RIZEBO!!**
- **THE RIZEBO IS A COST EFFECTIVE WAY FOR THE CONSUMER TO ENJOY THEIR OUTDOOR SPA DURING ANY KIND OF WEATHER.**

# DESCRIPTION

- **RIZEBO IS A SPA ENCLOSURE DESIGNED TO PROTECT THE SPA AND THE USERS AT ALL TIMES. THE SQUARE UNIT NOTES A DURABLE AND WEATHERPROOF MATERIAL ( SPECIAL HEAVY DUTY POLYESTER/SATIN ) THAT WILL ROLL AND UNROLL OR FOLD AND UNFOLD AS DESIRED TO SUIT NEEDS FOR SET-UP AND USE. THIS PRODUCT WILL SURROUND A SPA OF ANY SHAPE AND IS MADE TO WITHSTAND HARSH WEATHER CONDITIONS. THE 10X10 FRAME IS MADE OF DURABLE 16 GAUGE, 1.25" GALVANIZED TUBING. THE SIDES OF THE UNIT MEASURE APPROXIMATELY 6.5 FEET TALL AND THE HEIGHT FROM THE BOTTOM OF EACH ATTACHED SIDE SKIRT TO THE TOP OF THE UNIT MEASURES APPROXIMATELY 10 FEET TALL. RIZEBO FEATURES TWO STRATEGICALLY POSITIONED DOORS AND TWO WINDOWS (AND OPTIONAL ZIP AROUND WINDOW WITH SCREENS) THAT CAN BE REMOVED AT ANY TIME. THE WALLS OF THE RIZEBO FEATURE A HEAVY-DUTY FLAP SYSTEM THAT WRAPS AROUND THE TOP AND BOTTOM FRAME THAT ADDS STRENGTH AND DURABILITY AND WILL REDUCE THE AMOUNT OF DIRT AND WIND ALLOWED TO ENTER THE UNIT. EACH BOTTOM RAIL CAN BE RAISED FOR UNEVEN SURFACE.**



# FABRIC SPECIFICATIONS

## PERFORMANCE FABRIC PROPERTIES

- POLYESTER /SATIN-WOVEN MATERIAL
- OFFERS DURABILITY, MILDEW RESISTANCE, DIMENSIONAL STABILITY, WATERPROOF, CRACKING RESISTANCE, UV RESISTANCE FOR LONG TERM COLOR & STRENGTH RETENTION

## CLEANING INSTRUCTIONS

**RIZEBO FABRICS MAY BE SPOT WASHED BY USING A SOAPY SOLUTION OF A MILD DETERGENT AND LUKEWARM WATER. RINSE THOROUGHLY WITH CLEAN WATER TO REMOVE THE SOAP AND ALLOW TO AIR DRY. FOR MILDEW STAINS, PREPARE A SOLUTION OF ONE (1) CUP OF BLEACH PLUS HALF (1/2) CUP OF MILD DETERGENT PER GALLON OF WATER. SPRAY ON THE ENTIRE AREA AND ALLOW SOAKING. RINSE WITH CLEAN WATER AND ALLOW TO AIR DRY.**

PRODUCT PROPERTIES	NON FIRE RETARDANT
WEIGHT (oz/yd <sup>2</sup> ) (g/m <sup>2</sup> )	8.0 271
WIDTH-FUSED EDGE (IN)	60
TENSILE STRENGTH ASTM D5034 (WARP X FILL/LBS)	460 X 360
MULLEN BURST ASTM D3786 (PSI)	393
TONGUE TEAR ASTM D2261 (WARP X FILL/LBS)	20 X 18
TABER ABRASION ASTM D3884 (CYCLES)	600
HYDROSTATIC PRESSURE AATCC 127 (CM)	65
SPRAY RATING AATCC 127 (CM)	100
AIR PERMEABILITY ASTM D737 (CFM)	1.3
UPF (ULTRAVIOLET PROTECTION FACTOR)	50+
UVA & UVB ULTRAVIOLET BLOCKAGE	OVER 99%

# FRAME SPECIFICATIONS

- 1.25" DIAMETER TUBING
- 16 GAUGE
- FLOW COATED STEEL
- CORROSION PROTECTED
- QUICK & EASY ASSEMBLY
- NO TOOLS REQUIRED
- ALL TUBES CONNECTED BY PUSH-PINS FOR POSITIVE LOCATING
- RUST RESISTANT
- MINIMUM STORAGE SPACE REQUIRED
- MULTIPLE ANCHORING OPTIONS
- WITHSTANDS EXTREME WINDS



# FRAME SPECIFICATIONS CORNERS

- CORNERS ARE 1 3/8" 4-WAY FLAT
- PUSH-PINS FOR EASY RAIL RELEASE
- 1/4" U-BOLT ELIMINATES RATTLES



# FRAME SPECIFICATIONS PEAK

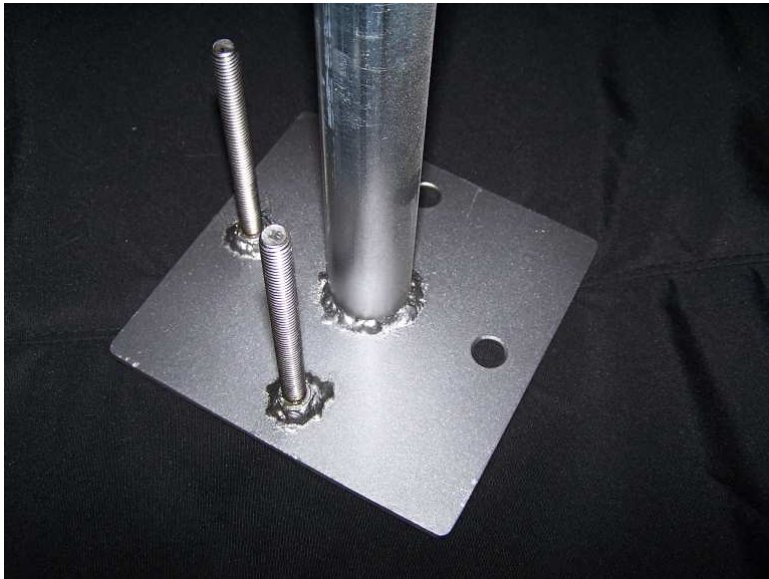
- 1 3/8" ZINC PLATED STEEL
- 18 GAUGE
- PUSH-PIN CONNECTORS



# FRAME SPECIFICATIONS

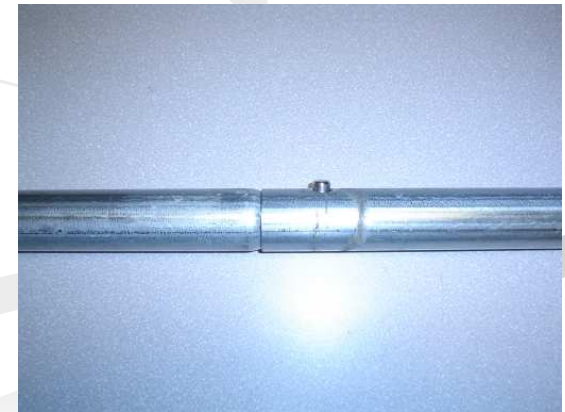
## LEGS

- ANCHOR PLATES 12 GAUGE ZINC PLATED STEEL
- 2-7/8" HOLES FOR EASY ANCHORING
- ATTACH BOTTOM RAILS TO BASE PLATE FOR EXTRA FRAME STABILITY
- RAISE BOTTOM RAILS UP TO 4" FOR UNEVEN SURFACES



# FRAME SPECIFICATIONS TUBING

- **STRONGEST TENT EVER MADE**
- **1-1/4" DIA.**
- **16 GAUGE STEEL**
- **1 1/4" ZINC FLO COAT STEEL**
- **CORROSION AND RUST RESISTANT**
- **ALL TUBES CONNECTED BY PUSH-PINS FOR POSITIVE LOCATING**
- **WILL LAST FOR YEARS**
- **BRAKES DOWN FOR EASY STORAGE**
- **SLIP CONNECTORS FOR EASY ASSEMBLY**



# ROOF DESIGN SPECIFICATIONS

- SECURE THE ROOF TO THE FRAME WITH HEAVY DUTY VELCRO STRAPS THAT TIGHTLY WRAP AROUND EACH CORNER AND ROOF SUPPORTS
- NO WORRIES FOR HEAVY SNOW LOADS-SNOW WILL SLIDE RIGHT OFF
- WATERPROOF ROOF-WILL NEVER LEAK OR DRIP
- HEAVY DUTY VELCRO STRAPS SECURE THE ROOF TO THE WALLS FOR A SNUG & DRAFT-FREE FIT



# WALL OPTIONS

## WINDOWS



## DOORS



- WITH OR WITHOUT WINDOWS
- HEAVY DUTY VINYL ZIP-AROUND WINDOWS WITH SCREENS ALLOW AIR CIRCULATION

- DOORS WITH HEAVY DUTY METAL ZIPPERS
- OVERLAPPING VELCRO FLAP PROTECTS ZIPPER FROM TENSION OR ICING

# WALL DESIGN SPECIFICATIONS

- WALLS ARE SECURED WITH A WRAP-AROUND FLAP SYSTEM
- HEAVY DUTY VELCRO STRAPS SECURELY ATTACH FRAME TO WALLS ALLOWING NO WIND, RAIN OR SNOW TO ENTER
- WALLS OVERLAP AND VELCRO TO EACH OTHER FOR EXTRA STRENGTH AND A SECURE SEAL
- OPTION OF HAVING 1-4 WALLS UP AT A TIME
- YOU CAN HAVE JUST THE ROOF OFF
- WITHSTANDS 80 MPH WINDS
- PATENT-PENDING DESIGN



# RAISE HOT TUB SALES

NEVER BEFORE SEEN PRODUCT

- **THE RIZEBO IS THE BEST ALTERNATIVE TO EXPENSIVE HOT TUB ENCLOSURES!**
- **15-30 MINUTES TO ASSEMBLE!**
- **CHARGE \$100-\$300 TO ASSEMBLE AT CUSTOMERS HOUSE!**
- **FINANCE THE RIZEBO WITH THE HOT TUB!**
- **RAISE SALES, INSTEAD OF DISCOUNTING THE HOT TUB. THROW IN A FREE OR DISCOUNTED RIZEBO!**
- **PUT UP A RIZEBO IN FRONT OF YOUR STORE AND WATCH THE NEW CUSTOMERS COME ROLLING IN!**
- **TAKE THE RIZEBO TO SPA SHOWS TO ATTRACT ATTENTION, WHILE PROTECTING YOU FROM ANY WEATHER!**
- **MANY NEW RIZEBO TENT DESIGNS COMING SOON!**





# COMPARE TO THE RIZEBO & SAVE \$\$\$\$

## GAZEBO

PRICE- \$3,500-\$15,000



- NORMAL, EVERYONE HAS SEEN ONE
- EXPENSIVE, WALLS NOT INCLUDED IN SOME
- THE WOOD ABSORBS THE STEAM
- PERMANENT STRUCTURE (MAY NEED PERMIT)
- IT STAYS EXACTLY THE WAY IT WAS BUILT
- NO WALLS CAN BE REMOVED
- VERY LITTLE COLOR SELECTION
- GAZEBO HAS ONLY ONE USE
- MAINTENANCE REQUIRED
- MAJOR ASSEMBLY REQUIRED
- HIGH SHIPPING COSTS

## RIZEBO

PRICE-\$2,200-2,900



- BRAND NEW PRODUCT-NEVER SEEN BEFORE
- 1/3 PRICE OF GAZEBO
- TURNS YOUR HOT TUB INTO A STEAM ROOM
- NOT A PERMANENT STRUCTURE
- ALL FOUR SIDES ARE EASILY REMOVABLE
- CAN CHOOSE WHICH WALLS COME OFF
- 11 DIFFERENT COLORS TO CHOOSE FROM
- USE THE RIZEBO FOR CAMPING, STORAGE, VENDOR TENTS OR SHELTER
- NO MAINTENANCE
- SAVE \$\$\$ ON SHIPPING AND HANDLING
- EASY ASSEMBLY (NO TOOLS REQUIRED)
- THE STRONGEST & MOST VERSATILE TENT EVER MADE

# COMPARE TO THE RIZEBO & SAVE \$\$\$\$

## TRADITIONAL TENTS

PRICE-\$350-\$6,500



- LIFE EXPECTANCY OF 6 MONTHS TO 1 YEAR
- LIMITED COLOR CHOICE
- LIMITED ANCHORING
- EXTREMELY WEAK FRAME
- CANNOT WITHSTAND WINDS
- WILL LEAK IN ADVERSE WEATHER CONDITIONS
- UNABLE TO HOLD SNOW OR WITHSTAND HAIL
- ALLOWS WIND, RAIN AND SNOW TO ENTER
- CANNOT LEAVE UP ALL YEAR
- NO CUSTOM SIZES AVAILABLE

## RIZEBO

PRICE-\$2,200-2,900



- LIFE EXPECTANCY OF 7-10 YEARS
- 11 COLORS TO CHOOSE FROM
- MANY ANCHORING OPTIONS
- 1 ¼ IN. 16 GAUGE GALVENIZED STEEL FRAME
- WITHSTANDS 80+ MPH WINDS
- WATERPROOF, FADE, CRACK, & MOLD RESISTANT
- WITHSTANDS HEAVY SNOW LOADS AND HAIL
- KEEPS WIND, RAIN, HAIL AND SNOW OUT
- KEEPS THE STEAM IN
- 10 TIMES THE STRENGTH OF ANY TENT MADE
- PATENT PENDING DESIGN
- WALLS ATTATCH TO TOP & BOTTOM RAILS
- CAN LEAVE UP ALL YEAR

**USE THE RIZEBO FOR STORAGE & CAMPING! MAKES A GREAT VENDOR TENT**



# WARRANTY

- **3 YEAR LIMITED WARRANTY**

- **THE LIMITED WARRANTY COVERS ONLY THE FABRIC FROM BEING UNSERVICEABLE BECAUSE OF LOSS OF STRENGTH AND/OR COLOR FROM NORMAL CONDITIONS OF EXPOSURE. THIS INCLUDES SUNLIGHT, MILDEW AND ATMOSPHERIC CHEMICALS. LABOR AND INSTALLATION SUPPLIED BY THE FABRICATOR AND/OR INSTALLER ARE NOT COVERED. THE CONSUMER IS RESPONSIBLE FOR NORMAL CARE, CLEANING AND MAINTENANCE OF THE FABRIC.**
- **THE WARRANTY IS FOR 3 YEARS FROM THE TIME OF THE PURCHASE OF THE FABRIC.**
- **A VALID COPY OF THE ORIGINAL INVOICE SHOWING THE DATE OF PURCHASE WILL BE REQUIRED FOR THE FABRIC REPLACEMENT.**
- **THIS WARRANTY GIVES YOU SPECIFIC LEGAL RIGHTS. YOU MAY ALSO HAVE OTHER RIGHTS WHICH VARIES FROM STATE TO STATE.**

- **LIMITED 1 YEAR WARRANTY**

- **RIZEBO MAKES EVERY EFFORT TO ASSURE THAT ITS PRODUCTS MEET HIGH QUALITY AND DURABILITY STANDARDS, AND WARRANTS TO THE ORIGINAL PURCHASER THAT THE FRAME, WINDOWS, ZIPPERS, STRAPS, FLAPS AND WELDS ARE FREE FROM DEFECTS IN MATERIALS AND WORKMANSHIP FOR THE PERIOD OF ONE YEAR. THIS WARRANTY DOES NOT IMPLY, OR EXPRESS COVERAGE FOR ANY DAMAGE DONE TO TENTS AS A RESULT OF NORMAL WEAR AND TEAR, STORM DAMAGE OR OTHER ACT OF GOD. EXCLUDED AS WELL, ARE HOLES, PUNCTURES OR OTHER DAMAGES WHICH CAN BE CAUSED DURING THE NORMAL INSTALLATION OF A TENT, WHENEVER PROPER INSTALLATION PROCEDURES ARE NOT FOLLOWED. IF SCRATCHED, THE FRAME MAY RUST. WELDS AND FOOT PLATES MAY RUST. THIS IS NORMAL.**
- **THE TENT MUST BE ANCHORED DOWN FOR ALL WARRANTIES TO BE IN EFFECT.**

- **WHEN UNPACKING, CHECK TO MAKE SURE ALL ITEMS ARE INTACT AND UNDAMAGED. IF ANY PARTS ARE MISSING OR BROKEN, PLEASE CALL RIZEBO, DO NOT CALL YOU'R RETAIL STORE.**
- **ONCE A SHIPMENT HAS BEEN PICKED UP BY THE FREIGHT CARRIER, RIZEBO HAS NO CONTROL OVER THE TIMELY DELIVERY OF THE SHIPMENT, OR DAMAGES WHICH MAY OCCUR. RIZEBO CANNOT GUARANTEE THAT A SHIPMENT WILL BE DELIVERED ON TIME OR TIME AS PROMISED BY THE FREIGHT CARRIER. IF YOUR SHIPMENT IS DAMAGED, PLEASE DO NOT SIGN THE SHIPPING PAPERS AS BEING "RECEIVED IN GOOD ORDER'. MAKE NOTE OF THE DAMAGE ON THE BILL OF LADING WHICH THE TRUCK DRIVER ASKS YOU TO SIGN. IF YOU DO NOT MAKE A NOTE OF THE DAMAGES ON THE BILL OF LADING, WE CANNOT FILE A CLAIM FOR DAMAGES.**
- **RETURN POLICY**
- **ALL TENTS PURCHASES ARE FINAL. RIZEBO DOES NOT HAVE A BUY BACK OR REFUND PROGRAM. EXCHANGES WILL ONLY BE MADE IN THE EVENT OF MANUFACTURING DEFECT. RETURNS WITHOUT PRIOR AUTHORIZATION WILL BE REFUSED. EXCHANGES WILL NOT BE AUTHORIZED WITHOUT OUR INSPECTION OF THE DEFAULT ITEM. ANY SHIPMENT RETURNED TO RIZEBO FOR REASONS OTHER THAN REPLACEMENT OR REPAIR WILL BE REFUSED. SHIPPING ARRANGEMENTS FOR RETURNING ANY TENT ARE THE SOLE RESPONSIBILITY OF THE CUSTOMER. FREIGHT CHARGES FOR SHIPPING THE TENT TO RIZEBO OR BACK TO THE CUSTOMER MUST BE PREPAID BY THE CUSTOMER.**
- **CUSTOM ORDERS**
- **A CUSTOM ORDER IS DEFINED AS: ANY SIZE, COLOR, FABRIC, FRAME ETC. NOT LISTED ON OUR WEB SITE.**
- **CUSTOM ORDERS MUST BE PREPAID AND NO REFUND OR CANCELLATION WILL BE ALLOWED.**
- **REQUIRED PERMITS**
- **RIZEBO HAS NO KNOWLEDGE OF APPLICABLE CITY OR COUNTY BUILDING OR TENT PERMITS IN YOUR AREA. IT IS THE BUYER'S RESPONSIBILITY TO INVESTIGATE APPLICABLE PERMIT REQUIREMENTS IN THEIR AREA PRIOR TO PURCHASING THE TENT.**
- **CANCELLATION POLICY**
- **ALL PURCHASES WHICH ARE CANCELLED PRIOR TO BEING SHIPPED WILL REQUIRE A 25% RESTOCKING FEE.**